



Product guide - Yealink SIP phones

Premium Admin phones

T54W

Description

Premium SIP Business Phone with Color screen

Up to 10 line keys | 4.3" 480 x 272-pixel color display with backlight | Dual-port Gigabit Ethernet | PoE | Integrated Bluetooth | Integrated 2.4Ghz & 5Ghz Wi-Fi | Supports up to 3 EXP50 expansion modules.



4,3-inch
Color Display



Built-in
Bluetooth



Built-in
Wi-Fi



T57W

Description

Executive SIP Business Phone with Color 7-inch Touch Screen

Up to 29 Memory Touch keys | 7" 800 x 480-pixel color display with backlight | Dual-port Gigabit Ethernet | PoE | Integrated Bluetooth | Integrated 2.4Ghz & 5Ghz Wi-Fi | Supports up to 3 EXP50 expansion modules.



7-inch
Touch Screen



Built-in
Bluetooth



Built-in
Wi-Fi



Budget Admin phones

T27G

Description

Standard SIP Phone for Business

Up to 8 line keys | 3.66" 240x120-pixel graphical LCD with backlight | Dual-port Gigabit Ethernet | PoE | Bluetooth via BT40 | Wi-Fi via WF40 | Supports up to 3 EXP20 expansion modules.



3,66-inch
LCD Display



Optional
Bluetooth



Optional
Wi-Fi



T29G

Description

Professional Gigabit Phone with Color Screen

Up to 10 line keys | 4.3" 480 x 272-pixel color display with backlight | Dual-port Gigabit Ethernet | PoE | Bluetooth via BT40 | Wi-Fi via WF40 | Supports up to 3 EXP20 expansion modules.



4,3-inch
Color Display



Optional
Bluetooth



Optional
Wi-Fi



T33G

Description

An Affordable SIP Phone for Business
Up to 4 line keys | 2.4" 320 x 240-pixel color display with backlight |
Dual-port Gigabit Ethernet | PoE



2,4-inch
Color Display



T41S

Description

An Affordable SIP Phone for Clear Communications
Up to 6 line keys | 2.7" 192x64-pixel graphical LCD with backlight |
Dual-port 10/100 Ethernet | PoE | Bluetooth via BT40 | Wi-Fi via WF40



2,7-inch
LCD Display



Optional
Bluetooth



Optional
Wi-Fi



DECT phones

W60P

Description

Cordless VoIP solution for small businesses (with W60B base)
Up to 5 SIP accounts | Up to 4 simultaneous voice calls | Up to 5 DECT Cordless Handsets
Per base | PoE | 2.4" 240 x 320 color screen with intuitive user interface



2.4-inch
Color Display



Quick-Charge



Up to 50M
Indoor Range



W56H

Description

Yealink W56H DECT Handset—Your Ideal Wireless Companion
2.4" 240 x 320 color screen with intuitive user interface | Seamless compatibility with
Yealink W60B DECT base | Up to 30 hours talk time | Up to 400 hours standby time



2.4-inch
Color Display



Quick-Charge



Up to 50M
Indoor Range



RT30

Description

Yealink W56H DECT Repeater—Greatly Extend Your Coverage
Compatible with Yealink W60B/W52 DECT IP Base Station | Up to 6 repeaters per base station | Plug & play setup | Wall mountable



Conference phones

CP920

Description

Touch-sensitive HD IP Conference Phone
20-foot (6-meter) and 360-degree voice pickup | Built-in 3-microphone array | 3.1" 248x120-pixel graphical LCD with backlight | PoE | Built-in Wi-Fi (2.4GHz, 802.11.b/g/n) | Built-in Bluetooth 4.0



20-Foot range
Voice Pickup



Built-in
Bluetooth



Built-in
Wi-Fi



CP930W-BASE

Description

High-performance SIP Cordless Phone System
 2.4" 240 x 320 color screen with intuitive user interface | Seamless compatibility with Yealink W60B DECT base | Up to 30 hours talk time | Up to 400 hours standby time



20-Foot range
Voice Pickup



Completely
Wireless



Built-in
Bluetooth



CP960

Description

Optima HD IP Conference Phone
 20-foot (6-meter) and 360-degree voice pickup | Built-in 3-microphone array | 5-inch multi-touch screen with 720x1280 resolution | PoE | Built-in Wi-Fi (2.4GHz/5GHz, 802.11a/b/g/n/ac) | Built-in Bluetooth 4.0 | Based on Android 5.1 operating system



20-Foot range
Voice Pickup



Built-in
Bluetooth



Built-in
Wi-Fi



Yealink Accessories

CPW90

Description

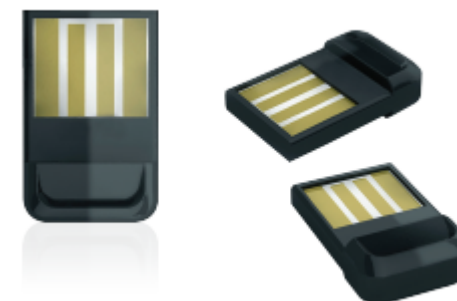
CP Wireless Expansion Mic CPW90 for CP960
 10-foot (3-meter) 360° voice pickup | Capacitive mute touchpad | Echo cancellation | DECT Technology | 19-hour talking time | 11-day standby time | 800mAh battery capacity



BT41

Description

Yealink Bluetooth USB dongle
 The Bluetooth USB dongle adds Bluetooth connectivity to your IP Phone with a wide variety of Bluetooth Headsets



EXP50

Description

EXP50 - High Performance Color LCD Expansion Module

The EXP50 Expansion Module for the SIP-54W, SIP-T57W, expanding the functional capability of your sip phone to a whole new level.



EXP20

Description

EXP20 - High Performance LCD Expansion Module

The EXP20 Expansion Module for the SIP-T27G and SIP-T29G, expanding the functional capability of your sip phone to a whole new level.



WF40

Description

WF40 - Wi-Fi USB Dongle

Wi-Fi USB Dongle WF40 is a low-power, small form factor device that can be implemented within offices for seamlessly connecting their IP phones to available wireless networks.
Supports Yealink SIP-T27G/T29G/T41S



WF50

Description

WF50 - Dual-Band Wi-Fi USB Dongle

Yealink WF50 is a next-generation Wi-Fi USB Dongle, designed to allow users to select whether to connect to a 2.4GHz (150 Mbps) Wi-Fi network or a 5GHz (up to 433 Mbps) Wi-Fi network.
Compatible with Yealink SIP-T27G/T41S IP Phone (Version 84)



YHS33

Description

Wideband Headset for Yealink IP Phone

Wideband audio for more natural sound and clearer conversations | Premium audio assures quality customer communications | Ultra noise cancelling microphone



EHS36

Description

Yealink Wireless Headset Adapter

The Yealink EHS36 Headset Adapter provides the technical interface between your Yealink IP Phones and compatible wireless headsets.



YLPOE30

Description

Yealink PoE Adapter

The Yealink YLPOE30 is designed to provide both data connection and electric power with only one Ethernet cable, keeping your desktop clean and tidy.

